

HT 264

250 Watt max

8 Ω

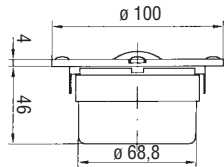
Ø 26 mm / 1"

4 Ω CAR CT266

TWEETER

Soft dome in seta con volume di carico posteriore e ferrofluido

Doped silk soft dome, with acoustic load, ferrofluid cooled



Potenza nominale **100 W**

Impedenza nominale **8 Ω**

Sensibilità (1W/1m) **92 dB**

Ø bobina mobile **26 mm**

Altezza traferro **3 mm**

Fori di fissaggio **4 \varnothing 5 / \varnothing 88**

Foro pannello **75 mm**

Re **6 Ω**

Fs **810 Hz**

Qms **1**

Qes **1,54**

Qts **0,61**

Mms **0,4 g**

Cms **0,1 mm/N**

D **32 mm**

Vas **0,007 dm³**

B \times l **2,74 Wb/m**

Xmax **0,65 mm**

η° **0,24 %**

Le **0,047 mH**

Peso **0,66 Kg**

