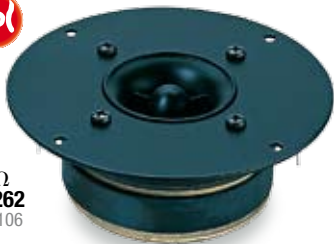
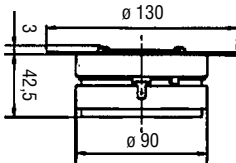


# CT 267

300 Watt max | 4 Ω | Ø 26 mm / 1"



▶ 8 Ω  
PT 262  
PAG 106



## HORN TWEETER

A compression, membrana in alluminio, con ferrofluido  
Compression tweeter, aluminium diaphragm, ferrofluid cooled

Potenza nominale	<b>150 W</b>	Re	<b>3,2 Ω</b>	D	-
Impedenza nominale	<b>4 Ω</b>	Fs	<b>1,8 kHz</b>	Vas	-
Sensibilità (1W/1m)	<b>105 dB</b>	Qms	-	BxI	-
Ø bobina mobile	<b>26 mm</b>	Qes	-	Xmax	-
Altezza traferro	<b>4 mm</b>	Qts	-	η <sub>o</sub>	-
Fori di fissaggio	<b>4 Ø 5 / Ø 116</b>	Mms	-	Le	<b>0,02 mH</b>
Foro pannello	<b>95 mm</b>	Cms	-	Peso	<b>1,15 Kg</b>

